



# ASPIRE

— TO MOVE —



## Chivers Street, Bath, BA2

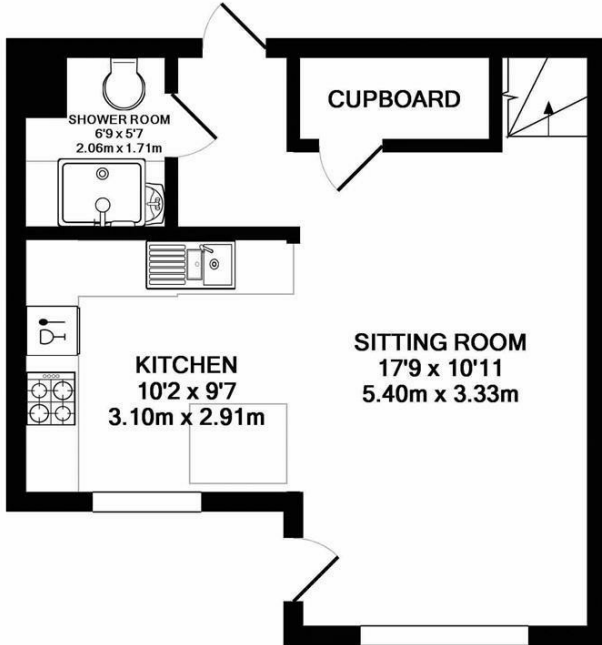
An immaculately presented two double bedroom detached home situated on the very popular Mulberry Park development in Combe Down. Complete with modern fitted kitchen and bathrooms, secure garden and allocated parking. Available from the 4th May.

Mulberry Park is a distinctive, contemporary development of 700 high quality homes, community facilities and open spaces – a destination with views across the city. This Lyncombe detached mews house has been thoughtfully designed for modern living, comfort and high energy efficiency. Accommodation is arranged over two floors and features open plan living room, kitchen diner and shower room on the ground floor. Whilst to the first floor you find two double bedrooms, one with balcony and a bathroom. Externally a south facing garden provides patio seating area and access to the front of the property.

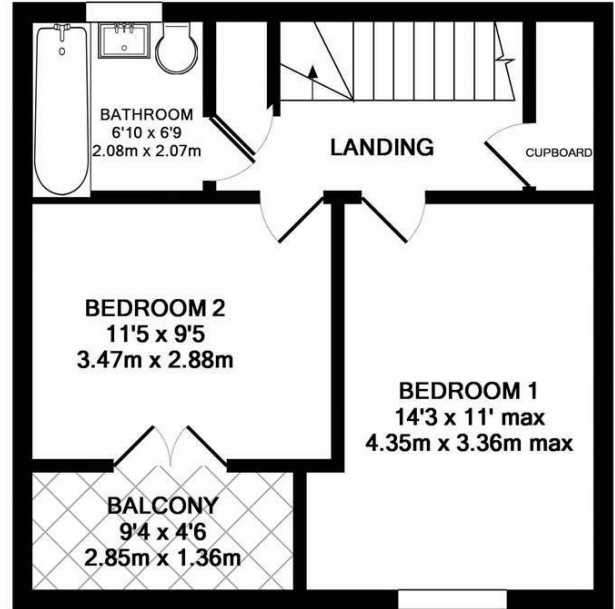
- Two bedroom detached house
- Allocated parking space
- Unfurnished
- Garden
- Available 4th May
- Mulberry Park
- Holding deposit: £380
- Council tax band D

**£1,650 Per month**

# Floor Plans



GROUND FLOOR  
APPROX. FLOOR  
AREA 396 SQ.FT.  
(36.8 SQ.M.)

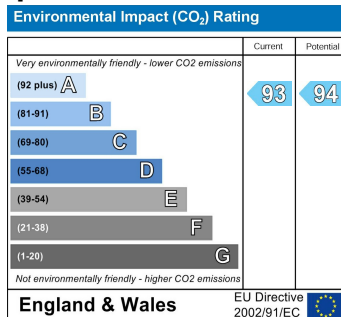
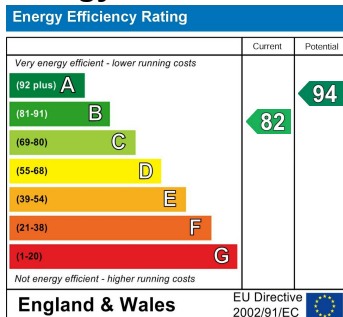


1ST FLOOR  
APPROX. FLOOR  
AREA 401 SQ.FT.  
(37.3 SQ.M.)

TOTAL APPROX. FLOOR AREA 797 SQ.FT. (74.1 SQ.M.)

Whilst every attempt has been made to ensure the accuracy of the floor plan contained here, measurements of doors, windows, rooms and any other items are approximate and no responsibility is taken for any error, omission, or mis-statement. This plan is for illustrative purposes only and should be used as such by any prospective purchaser. The services, systems and appliances shown have not been tested and no guarantee as to their operability or efficiency can be given  
Made with Metropix ©2018

## Energy Performance Graph



These particulars, whilst believed to be accurate are set out as a general outline only for guidance and do not constitute any part of an offer or contract. Intending purchasers should not rely on them as statements of representation of fact, but must satisfy themselves by inspection or otherwise as to their accuracy. No person in this firm's employment has the authority to make or give any representation or warranty in respect of the property.